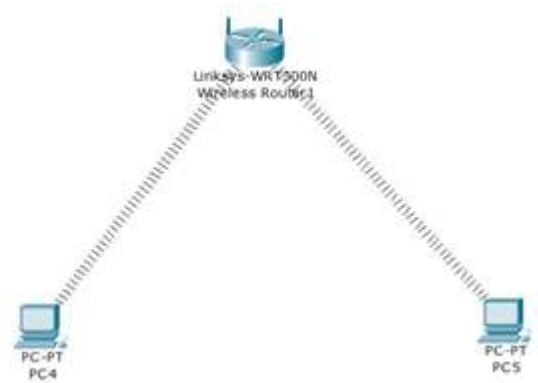


### Esercizio ALTRO (a)

Realizzare la rete di figura [inserendo nuova interfaccia](#) nei PC (rimuovendo il modulo wired LAN ed installando il modulo wireless LAN – **wireless NIC** ) e configurando come segue:



**Router: impostazione LAN** con IP **192.168.1.1/24** che corrisponde al Gateway di ciascun PC *senza impostare AUTENTICAZIONE*

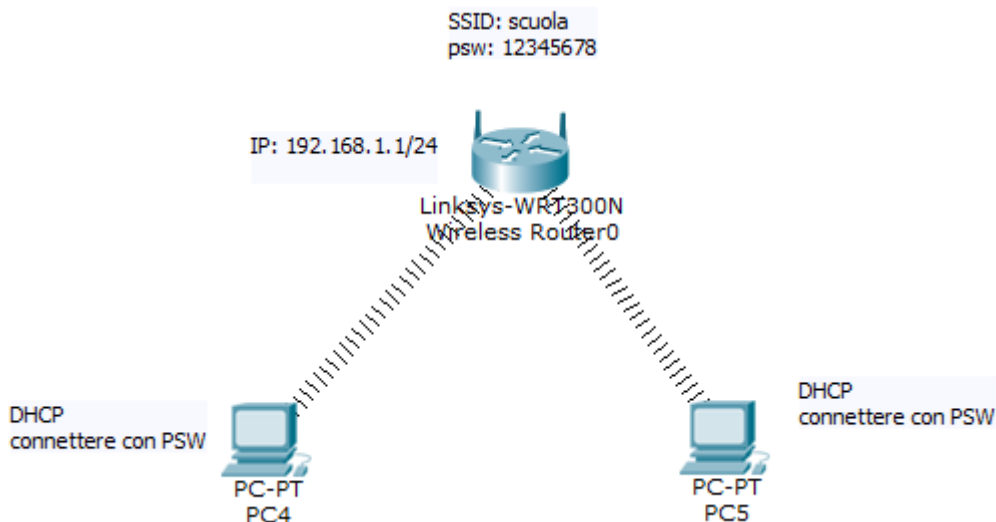


**PC con indirizzamento DHCP** (si noti come l'assegnamento degli IP sia con lo stesso **campo rete** dell'impostazione LAN del router)

Simulare , catturando immagini significative di uno scenario: test di connessione tra PC4 e PC5

### Esercizio ALTRO (a) bis

Realizzare l'esercizio precedente *impostando AUTENTICAZIONE*

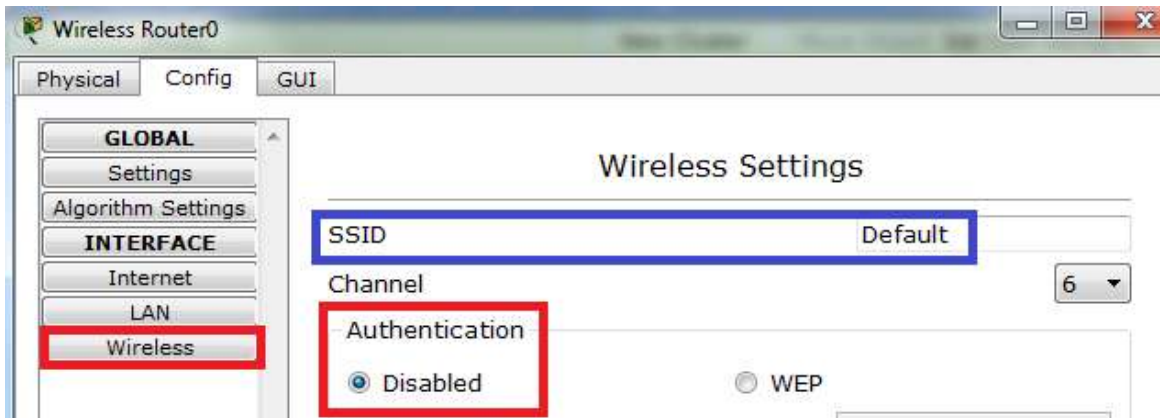


**Si ricordi** che di default:

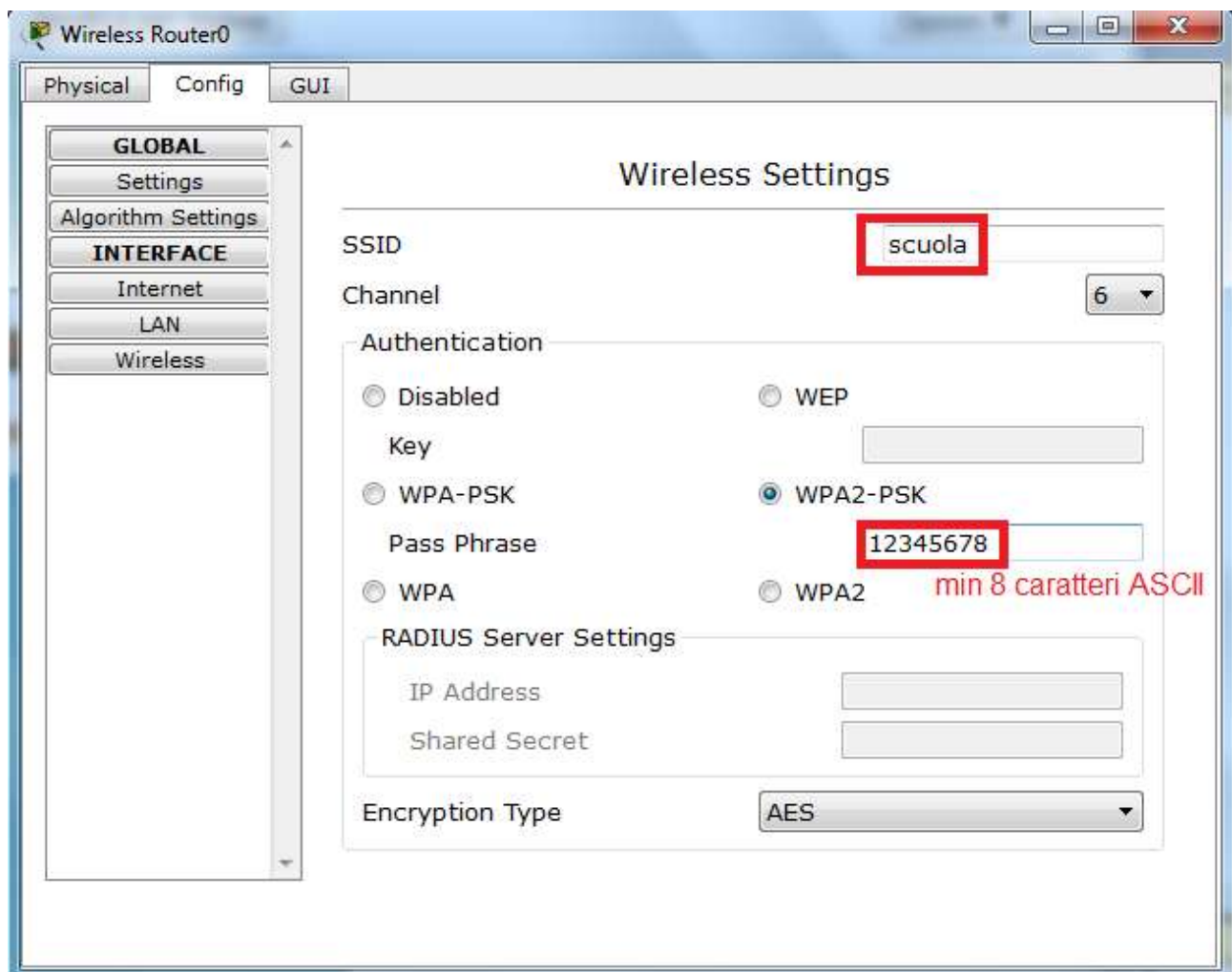
IP di default: 192.168.0.1/24  
SSID di default del Wireless Route:r Default



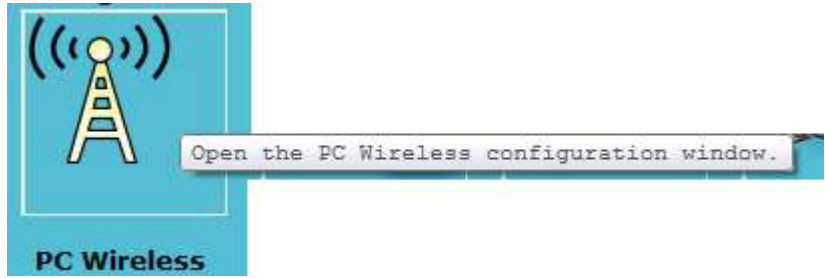
Linksys-WRT300N  
Wireless Router1



**Per abilitare l'AUTENTICAZIONE ed impostare una password**



Poi si configura ogni PC:



Physical | Config | **Desktop** | Software/Services

**LINKSYS**  
A Division of Cisco Systems, Inc.

Link Information | **Connect** | Profiles

Below is a list of available wireless networks. To search for more wireless networks, click the **Refresh** button. To view more information about a network, select the wireless network name. To connect to that network, click the **Connect** button below.

Wireless Network Name	CH	Signal
scuola	1	100%

**Site Information**

**Wireless Mode** Infrastructure  
**Network Type** Mixed B/G/N  
**Radio Band** Auto  
**Security** WPA2-PSK  
**MAC Address** 0001.9782.2006

Refresh | **Connect**

2.4GHz

Adapter is Inactive

Wireless-N Notebook Adapter | Wireless Network Monitor v1.0 | Model No. **WPC300N**

Digitando la password

**LINKSYS**  
A Division of Cisco Systems, Inc.

**WPA2-Personal Needed for Connection**

This wireless network has WPA2-Personal enabled. To connect to this network, enter the required passphrase in the appropriate field below. Then click the **Connect** button.

**Security** WPA2-Personal Please select the wireless security method used by your existing wireless network.

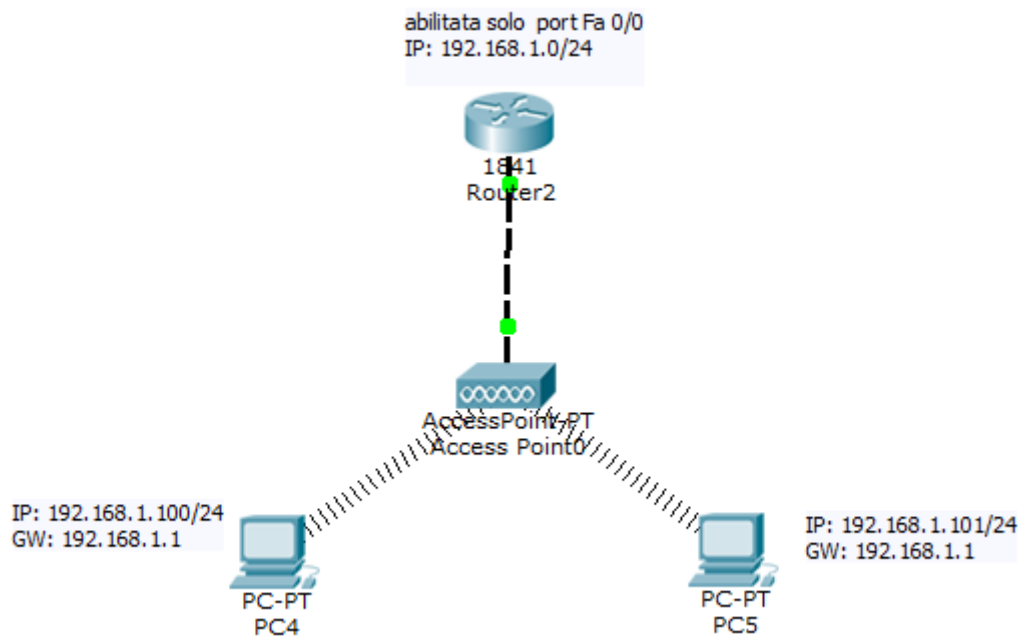
**Pre-shared Key** 12345678 Please enter a Pre-shared Key that is 8 to 63 characters in length.

Cancel | **Connect**

←connessione

### Esercizio ALTRO (b)

Realizzare la rete di figura, usando un **access point** e configurando **IP statici** per i PC



Simulare , catturando immagini significative di uno scenario: test di connessione tra PC4 e PC5

### Sitografia:

<http://cs-study.blogspot.it/2012/12/wireless-communication-in-packet-tracer.html>

[http://myitzn.blogspot.it/2015/01/cisco-packet-tracer-practice-file\\_31.html](http://myitzn.blogspot.it/2015/01/cisco-packet-tracer-practice-file_31.html)

con [guida](#) "Install a Wireless NIC"

